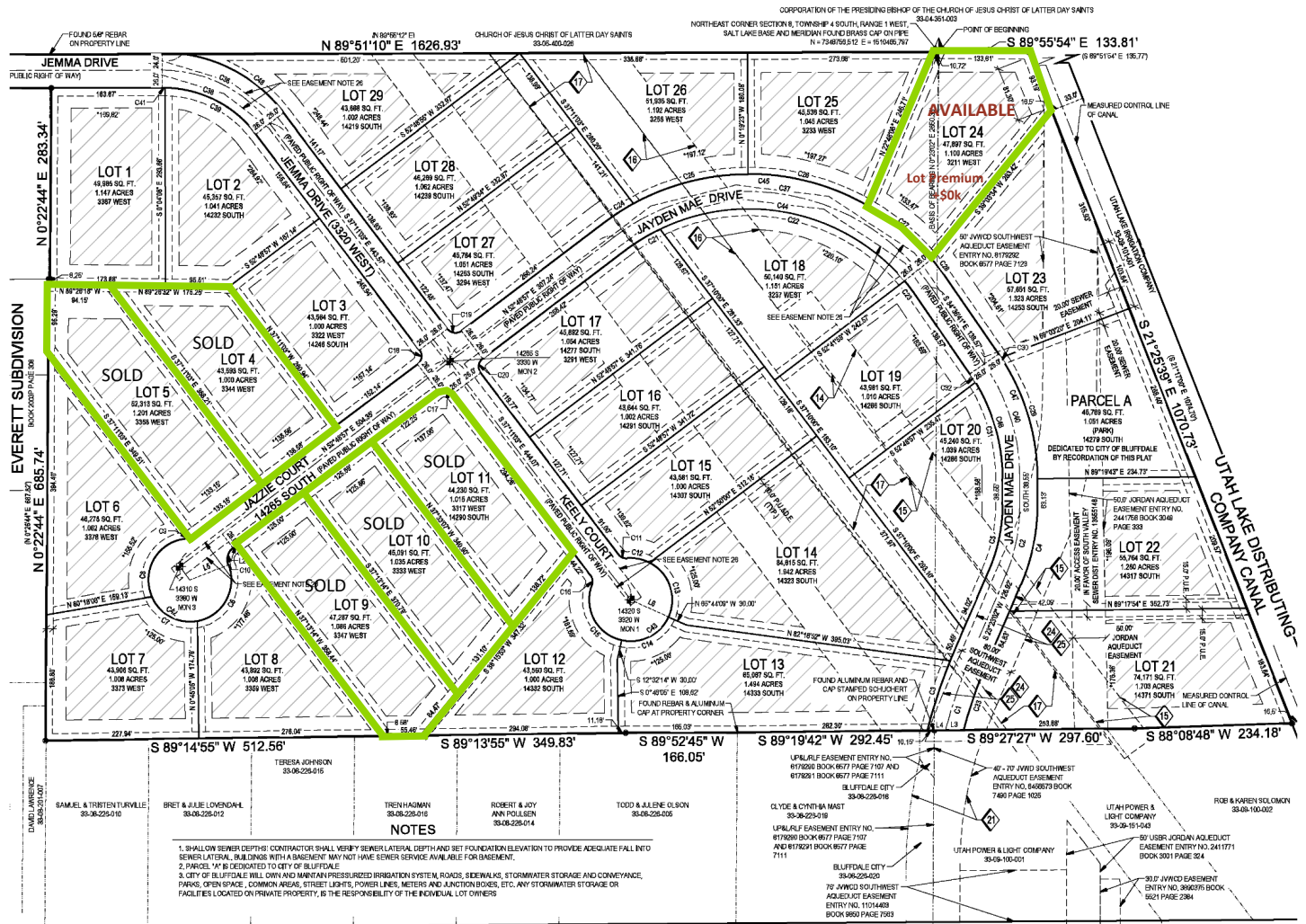


# Bluffdale

# Vista Meadows Phase 1

14250 S 3300 W, Bluffdale

1 of 6 Lots Available 1.10 Acres +\$0k



**NOTES**

1. SHALLOW SEWER DEPTHS: CONTRACTOR SHALL VERIFY SEWER LATERAL DEPTH AND SET FOUNDATION ELEVATION TO PROVIDE ADEQUATE FALL INTO SEWER LATERAL. BUILDINGS WITH A BASEMENT MAY NOT HAVE SEWER SERVICE AVAILABLE FOR BASEMENT.
2. PARCELS 14 & 18 DEDICATED TO CITY OF BLUFFDALE
3. CITY OF BLUFFDALE WILL OWN AND MAINTAIN PRESSURIZED IRRIGATION SYSTEM, ROADS, SIDEWALKS, STORMWATER STORAGE AND CONVEYANCE, PARKS, OPEN SPACE, COMMON AREAS, STREET LIGHTS, POWER LINES, METERS AND JUNCTION BOXES, ETC. ANY STORMWATER STORAGE OR FACILITIES LOCATED ON PRIVATE PROPERTY, IS THE RESPONSIBILITY OF THE INDIVIDUAL LOT OWNERS

**NOTES**

CC&Rs are still being drafted, but we are anticipating:

- 4,500+ total square feet required
- 3rd car garage required



**Gordon Milar: (801) 259-1800 Ben Milar: (801) 205-7584**

[www.gmilar.com](http://www.gmilar.com)

Marketed by Ulrich Realtors. Pricing and availability may vary from shown and may be subject to builder obtaining lots. All information deemed reliable but not guaranteed and is subject to change without prior notice or agreement.